



Red Kap® Long Size, Long Sleeve Industrial Work Shirt. SP14LONG



Red Kap puts the toughest materials and advanced stay-clean technology into this shirt so you get the most out of it. This hardworking IL50 style is tested through 50 industrial launderer washes.

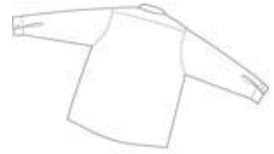
- 4.25-ounce, 65/35 poly/cotton with Touchtex™ technology for superior color retention, stain release and wickability
- Open collar with sew n-in stays
- 6 buttons with metal collar gripper closure at neck
- Two button-through pockets
- Bartacked pencil stall on left pocket

CARE INSTRUCTIONS

Machine wash, tumble dry.

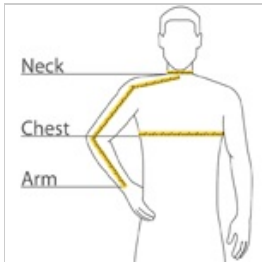


front



back

HOW TO MEASURE



CHEST WIDTH

Measure under the arm and around the fullest part of the chest with arms down, keeping tape horizontal.

NECK

Measure around the fullest part of the neck at the base.

ARM

Place hand on hip. Start at the center of the back of the neck and measure across the shoulder, to the elbow, and then down to the wrist.

SIZE CHART

| | ML | LL | XLL | 2XLL | 3XLL |
|-------|-----------------|-----------------|-----------------|-----------------|-----------------|
| Chest | 38 1/2 - 42 | 42 1/2 - 46 | 46 1/2 - 50 | 50 1/2 - 53 | 53 1/2 - 56 |
| Neck | 14 5/8 - 15 1/2 | 15 5/8 - 16 1/2 | 16 5/8 - 17 1/2 | 17 5/8 - 18 1/2 | 18 5/8 - 19 1/2 |
| Arm | 36.25 | 36.75 | 37.25 | 37.75 | 38.25 |

COLOR INFORMATION



Black
PMS BLACK C



Charcoal
PMS 7540C



Grey
PMS 409C



Light Blue
PMS 652 C



Light Grey
PMS 422C



Light Tan
PMS 7536C



Navy
PMS 532C



Petrol Blue
PMS 2135C