



OGIO® Ladies Melrose Tote. 414006

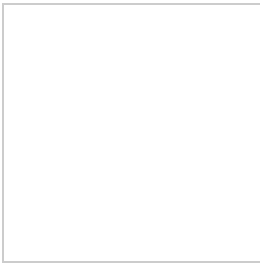


Large metal buttons give this feminine tote a classy look, while padded tech compartments make it perfect for work or school.

- T/C 900D two-tone cotton/poly
- Top-entry padded laptop compartment
- Padded tablet/e-reader sleeve
- Three side flap pockets
- Fully padded base to protect laptop
- Large zippered interior compartment
- Two interior elastic side pockets for cords and beverage storage
- Interior zippered valuables pocket
- Removable decorative belt
- Easy-access deluxe organization panel with zippered pocket
- Padded grab handles
- Laptop sleeve: 14.5"h x 10.5"w x 1"d; fits most 15" laptops
- Dimensions: 15"h x 16.5"w x 4"d
- Capacity: 1,000 cu.in./16L
- Weight: 1.6 lbs./0.62kg

Bags not intended for use by children 12 and under.

HOW TO MEASURE



BAGS

Measurements and decoration areas vary by bag.

SIZE CHART

	OSFA
Bags	N/A

COLOR INFORMATION



Storm Grey



Sunset