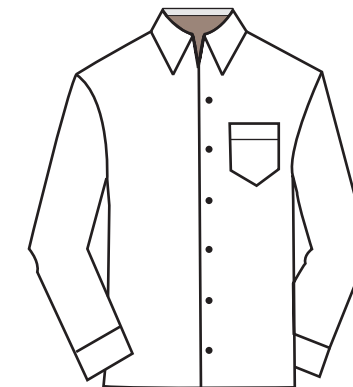




BG7218 - Men's Long Sleeve Poplin



- 58% cotton, 39% polyester, 3% spandex blend
- 4.5 ounce
- Adjustable cuffs
- Patch pocket
- Stain release
- Wrinkle resistant
- Spread collar
- Soft touch finish
- Matching pearlized buttons
- Double back yoke
- 8 brilliant colors
- Sizes S-6XL
- Classic fit



front



back