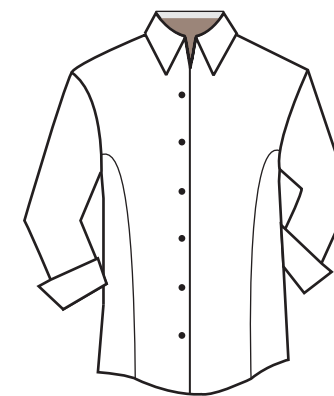




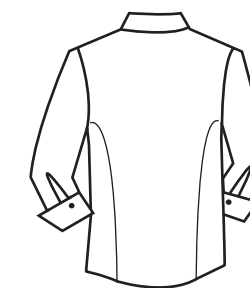
BG6218 - Ladies 3/4 Sleeve Blouse



- ✦ 58% cotton, 39% polyester, 3% spandex blend
- ✦ 4.5 ounce
- ✦ Curved side panels for slimmer feminine look
- ✦ 3/4 Sleeve with buttoned cuff
- ✦ Stain release
- ✦ Wrinkle resistant
- ✦ Spread collar
- ✦ Soft touch finish
- ✦ Matching pearlized buttons
- ✦ Double back yoke
- ✦ 20 brilliant colors
- ✦ Sizes XS-4XL
- ✦ Feminine Fit



front



back