

Blue Generation

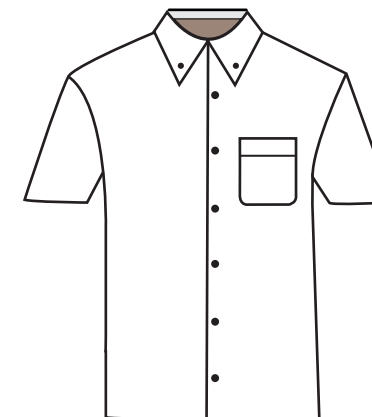
Manufacturers of logo ready apparel since 1944



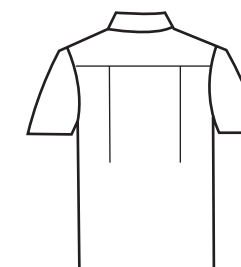
BG7216S - Men's Short Sleeve Easy Care Poplin



- Easy care poplin
65% polyester/
35% cotton blend
- Lightweight 5.5 ounce
- Hemmed sleeves
- Patch pocket
- Stain release
- Button down collar
- Wrinkle & crease resistant
- 2 side back pleats
- Bone horn buttons
- Double back yoke
- 27 Brilliant colors
- Sizes S-10XL, Talls LT-3XLT
- Classic fit



front



back