

Blue Generation

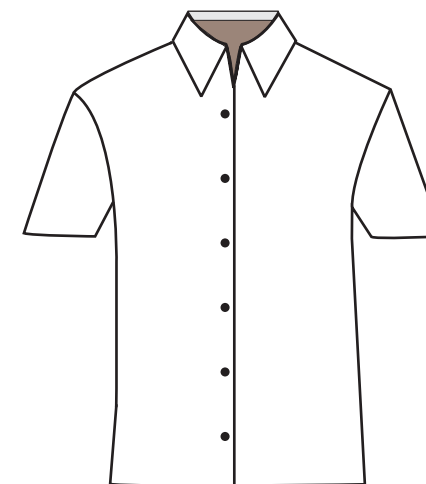
Manufacturers of logo ready apparel since 1944



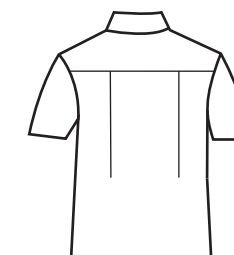
BG6216S - Ladies Short Sleeve Easy Care Poplin



- Easy care poplin
65% polyester/
35% cotton blend
- Lightweight 5.5 ounce
- Stain release
- Spread collar
- 2 back pleats
- Bone horn buttons
- Double back yoke
- 26 Brilliant colors
- Sizes XS-4XL
- Classic fit



front



back