

# Blue Generation

Manufacturers of logo ready apparel since 1944



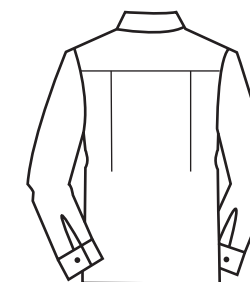
## BG6216 - Ladies Long Sleeve Easy Care Poplin



- Easy care poplin  
65% polyester/  
35% cotton blend
- Lightweight 5.5 ounce
- Adjustable cuffs
- Stain release
- Spread collar
- Wrinkle & crease resistant
- 2 side back pleats
- Bone horn buttons
- Double back yoke
- 26 Brilliant colors
- Sizes XS-4XL
- Classic fit



front



back